



Government of India
Ministry of Earth Sciences
India Meteorological Department



Press Release
Date: 20th January 2026
Time of Issue: 1315 hours IST

Subject: (i) Under the influence of Western Disturbance, wet spell likely over Western Himalayan region during next 7 days with possibility of isolated heavy rainfall/snowfall over Kashmir valley on 22nd & 23rd and Himachal Pradesh & Uttarakhand on 23rd January.
(ii) Isolated to scattered rainfall likely over adjoining plains of northwest India during 22nd -24th January.
(iii) Dense fog conditions very likely at isolated places over Punjab, Haryana, Chandigarh, during next 2-3 days.

Realised weather during past 24 hours ending at 0830 hours IST of today, the 20th January, 2026:

- ❖ **Very Dense fog (visibility <50 m) conditions** prevailed in some parts of Haryana & West Rajasthan and **dense fog (visibility 50-199 m) conditions** prevailed in isolated pockets of Punjab, West Uttar Pradesh, East Rajasthan and Meghalaya.
- ❖ **Visibility reported (in meters ≤ 200 m): Meghalaya:** Barapani 50; **Punjab:** Amritsar (50) Bathinda (100); **Haryana:** Hisar (20), Bhiwani (<50), Narnaul (<50); **West Uttar Pradesh:** Agra IAF (100); **West Rajasthan:** Bikaner, Churu; **East Rajasthan:** Pilani (50)
- ❖ **Cold wave to severe cold wave conditions** prevailed in some parts of Himachal Pradesh and cold wave conditions in isolated pockets over Punjab.
- ❖ **Ground frost conditions** have been recorded in isolated pockets of Uttarakhand.

Temperature Conditions during past 24 hours till 0830 hours IST of today:

- ❖ **Minimum temperatures** were 1-4°C at few places over Himachal Pradesh and Uttarakhand; 5°-9°C at many places over remaining parts of Punjab, Haryana, Chandigarh & Delhi; at few places over Uttar Pradesh & Madhya Pradesh; and at isolated places over Odisha, Bihar, Manipur & Meghalaya. It is 10°C and above for remaining parts of the country, except higher reaches of Western Himalayan region where it was less than 0°C.
- ❖ **Minimum Temperatures** were above normal by (2°C to 5°C) over Central India and adjoining western India, Haryana, East Uttar Pradesh, Bihar, Assam & Meghalaya and below normal (-2°C to -4°C) at isolated places over Jharkhand, Chhattisgarh, Odisha, Telangana, Rayalaseema, Tamil Nadu and near normal over rest parts of the country. (refer to ANNEXURE IV)
- ❖ The **lowest minimum temperature** of 2.8°C was observed at Amritsar (**Punjab**) over the plains of India.

Weather Systems, Forecast and Warnings (refer to ANNEXURE I & II):

- ❖ A trough aloft in middle and upper tropospheric westerlies with its axis in middle tropospheric level roughly along Long. 73°E to the north of Lat. 32°N persists.
- ❖ An upper air cyclonic circulation lies over northwest Uttar Pradesh & neighbourhood in lower tropospheric levels.
- ❖ An intense Western disturbance is likely to affect Northwest India from the night of 21st January, 2026.
- ❖ An upper air cyclonic circulation lies over southeast Bay of Bengal & neighbourhood in middle tropospheric level.
- ❖ An upper air cyclonic circulation lies over northeast Assam & neighbourhood in lower tropospheric level.
- ❖ Subtropical westerly Jet Stream with core winds of the order of 130 knots at 12.6 km above mean sea level prevails over North India.

Under the influence of above system, the following weather is likely:

- ❖ Isolated to scattered light to moderate rainfall/snowfall likely over Jammu-Kashmir-Ladakh-Gilgit-Baltistan-Muzaffarabad on 20th-21st and fairly widespread to widespread rainfall/snowfall over Western Himalayan Region during 22nd-26th January; with **isolated heavy falls over Kashmir valley on 22nd & 23rd and higher reaches of Himachal Pradesh and Uttarakhand on 23rd January.**
- ❖ Isolated to scattered light to moderate rainfall over Punjab, Haryana, Chandigarh, West Uttar Pradesh during 22nd - 24th; East Uttar Pradesh on 23rd & 24th and Rajasthan on 22nd & 23rd January.
- ❖ Thunderstorm activity accompanied with **lightning & gusty winds (speed 30-50 kmph)** likely over Jammu-Kashmir-Ladakh-Gilgit-Baltistan-Muzaffarabad and Himachal Pradesh on 22nd & 23rd; Uttarakhand during 23rd - 26th; Punjab, Haryana Chandigarh & Delhi, West Rajasthan during 22nd & 23rd; West Uttar Pradesh and East Rajasthan on 23rd; East Uttar Pradesh on 23rd & 24th January.
- ❖ Thunderstorm activity accompanied with **lightning likely** over Tamil Nadu, Puducherry & Karaikal on 24th January.

Forecast of minimum temperatures:

- ❖ No significant change in minimum temperatures likely over Northwest India during next 2 days; gradual rise by 3-5°C during subsequent 5 days.
- ❖ No significant change in minimum temperatures likely over Central India during next 2 days; gradual rise by 2-4°C during subsequent 3 days and no significant change thereafter.
- ❖ No significant change in minimum temperatures likely over Maharashtra India during next 24 hours; gradual rise by 2-4°C during subsequent 5 days.
- ❖ No significant change in minimum temperatures likely over rest parts of the country.

Dense Fog & Cold wave Warnings:

- ❖ **Dense fog** conditions also likely during morning/night hours in isolated pockets over Punjab, Haryana and Chandigarh till 22nd January.
- ❖ **Cold wave conditions** very likely in isolated pockets of Himachal Pradesh on 20th & 21st January.
- ❖ **Cold day conditions** very likely in isolated pockets of Himachal Pradesh on 23rd January.

Ground Frost Warning:

Ground Frost very likely in isolated pockets of Uttarakhand on 20th and 21st January.

Fisherman Warning:

Fishermen are advised not to venture into the following areas during 20th January to 25th January, 2026:

- ❖ **Bay of Bengal:** No Warning.
- ❖ **Arabian Sea:** Over northwest Arabian Sea from 22nd to 24th January, 2026 along and off Oman coast on 23rd, January, 2026 some parts of west Arabian Sea from 23rd to 24th January 2026 along and off Somalia coast 22nd to 25th January 2026.

Weather conditions and forecast over Delhi/NCR during 20th -23rd January, 2026 (ANNEXURE III) For more details, kindly refer National Weather Bulletin:

https://mausam.imd.gov.in/responsive/all_india_forecast_bulletin.php

For District wise warnings refer: <https://mausam.imd.gov.in/responsive/districtWiseWarningGIS.php>

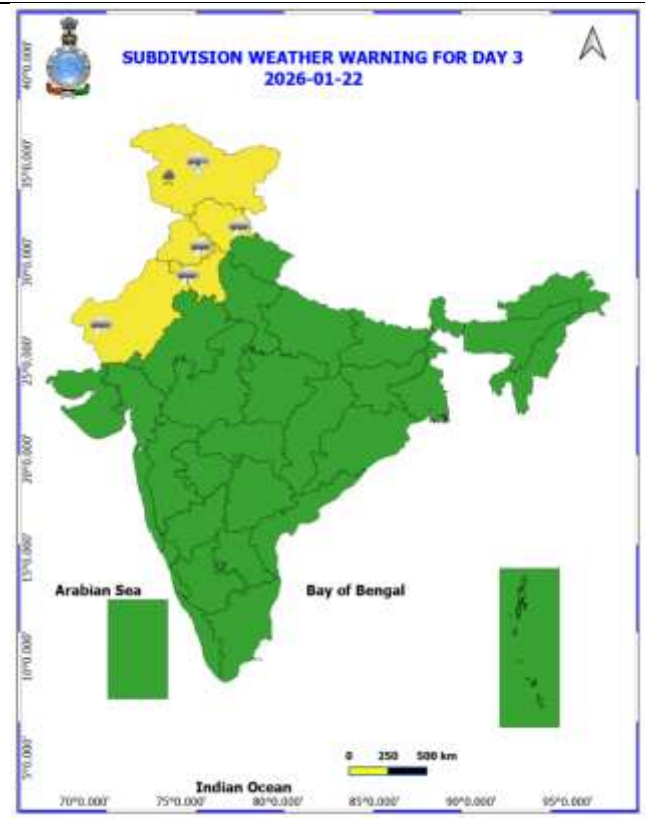
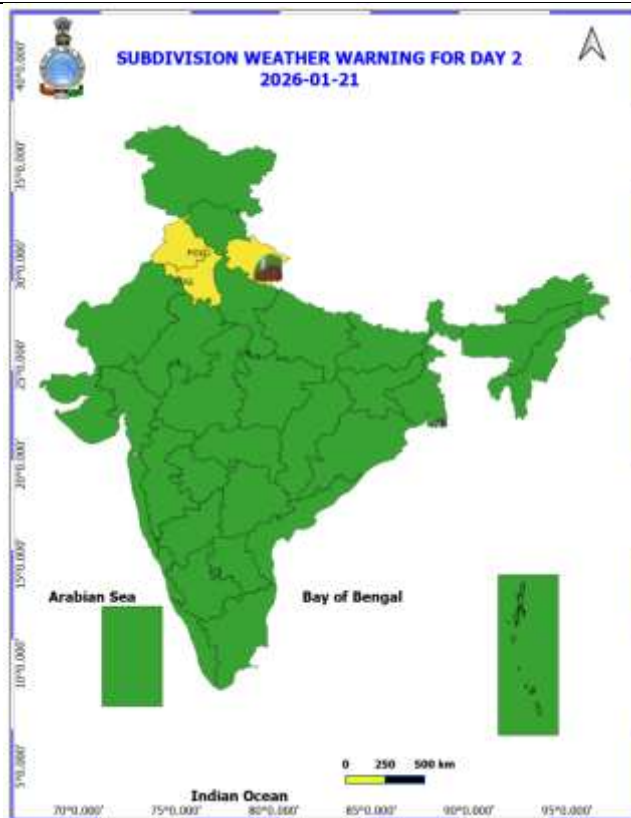
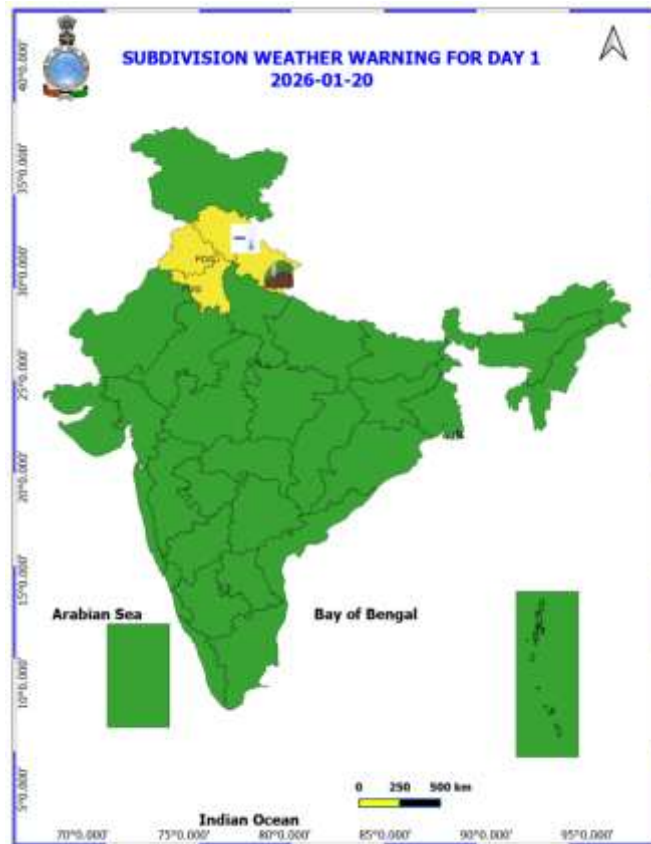
For Fishermen warning refer <https://rsmcnewdelhi.imd.gov.in/fishermen-warning.php>

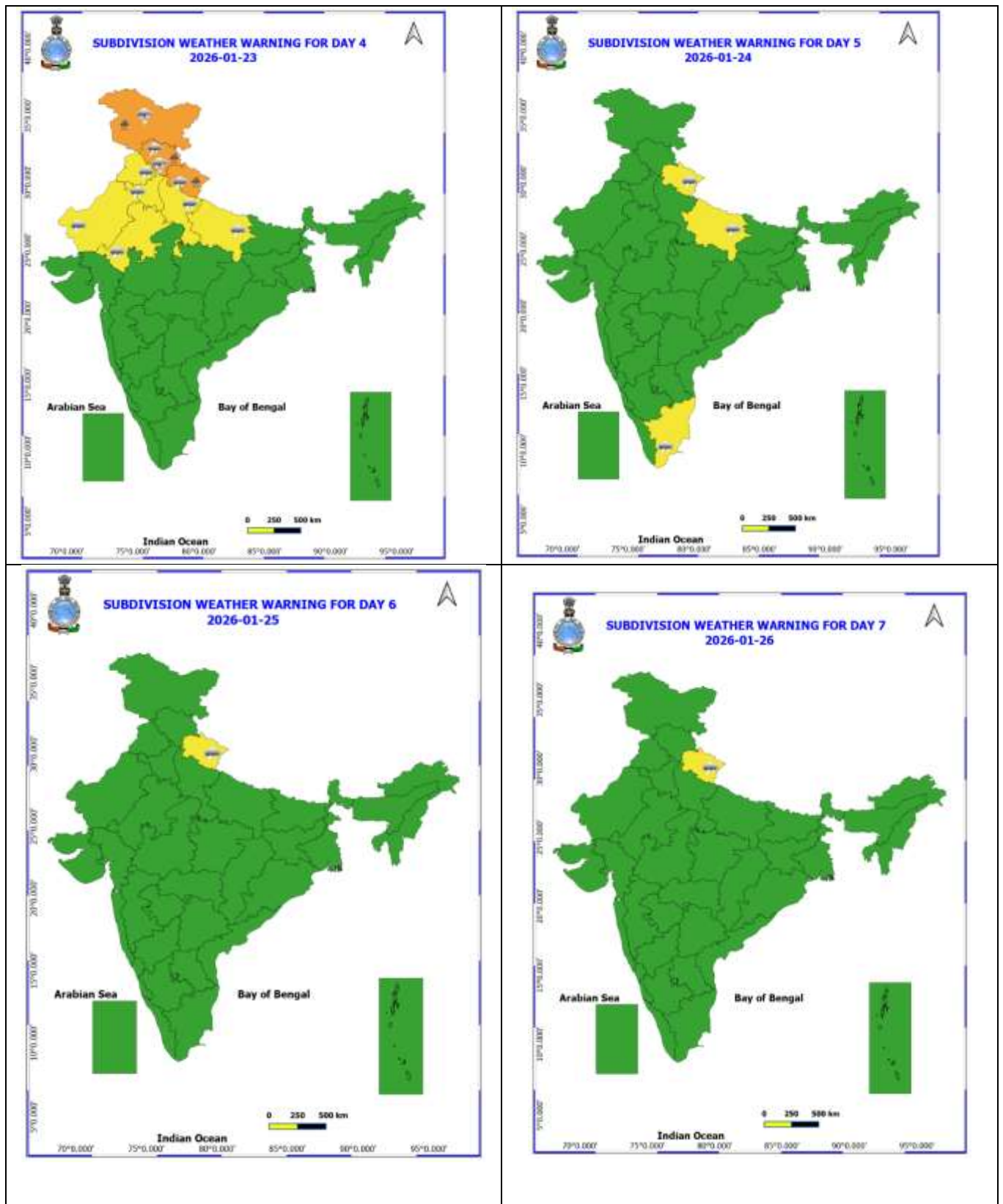
ANNEXURE I

Table-1								
7 Days Rainfall Forecast								
S.No.	Subdivision	20- Jan	21- Jan	22- Jan	23- Jan	24- Jan	25- Jan	26- Jan
		Day 1	Day 2	Day 3	Day 4	Day 5	Day 6	Day 7
1	ANDAMAN & NICOBAR ISLANDS	SCT	SCT	SCT	SCT	ISOL	DRY	DRY
2	ARUNACHAL PRADESH	ISOL	ISOL	DRY	DRY	ISOL	ISOL	ISOL
3	ASSAM & MEHGHALAYA	DRY	DRY	DRY	DRY	DRY	DRY	DRY
4	NAGALAND, MANIPUR, MIZORAM AND TRIPURA	DRY	DRY	DRY	DRY	DRY	DRY	DRY
5	SUB HIMALAYAN WEST BENGAL & SIKKIM	ISOL	DRY	DRY	ISOL	ISOL	ISOL	DRY
6	GANGETIC WEST BENGAL	DRY	DRY	DRY	DRY	DRY	DRY	DRY
7	ODISHA	DRY	DRY	DRY	DRY	DRY	DRY	DRY
8	JHARKHAND	DRY	DRY	DRY	DRY	DRY	DRY	DRY
9	BIHAR	DRY	DRY	DRY	DRY	DRY	DRY	DRY
10	EAST UTTAR PRADESH	DRY	DRY	DRY	SCT	ISOL	DRY	DRY
11	WEST UTTAR PRADESH	DRY	DRY	ISOL	SCT	ISOL	DRY	ISOL
12	UTTARAKHAND	DRY	DRY	ISOL	FWS	SCT	ISOL	SCT
13	HARYANA, CHANDIGARH & DELHI	DRY	DRY	ISOL	SCT	ISOL	DRY	ISOL
14	PUNJAB	DRY	DRY	SCT	FWS	ISOL	DRY	ISOL
15	HIMACHAL PRADESH	DRY	DRY	FWS	ISOL	SCT	ISOL	FWS
16	JAMMU AND KASHMIR AND LADAKH	ISOL	ISOL	ISOL	ISOL	FWS	SCT	FWS
17	WEST RAJASTHAN	DRY	DRY	ISOL	ISOL	DRY	DRY	ISOL
18	EAST RAJASTHAN	DRY	DRY	ISOL	ISOL	DRY	DRY	ISOL
19	WEST MADHYA PRADESH	DRY	DRY	DRY	DRY	DRY	DRY	DRY
20	EAST MADHYA PRADESH	DRY	DRY	DRY	DRY	DRY	DRY	DRY
21	GUJRAT REGION	DRY	DRY	DRY	DRY	DRY	DRY	DRY
22	SAURASHTRA & KUTCH	DRY	DRY	DRY	DRY	DRY	DRY	DRY
23	KONKAN & GOA	DRY	DRY	DRY	DRY	DRY	DRY	DRY
24	MADHYA MAHARASHTRA	DRY	DRY	ISOL	DRY	DRY	DRY	DRY
25	MARATHWADA	DRY	DRY	DRY	DRY	DRY	DRY	DRY
26	VIDARBHA	DRY	DRY	DRY	DRY	DRY	DRY	DRY
27	CHHATTISGARH	DRY	DRY	DRY	DRY	DRY	DRY	DRY
28	COASTAL ANDHRA PRADESH	DRY	DRY	DRY	DRY	DRY	DRY	DRY
29	TELANGANA	DRY	DRY	DRY	DRY	DRY	DRY	DRY
30	RAYALASEEMA	DRY	DRY	DRY	DRY	DRY	DRY	DRY
31	TAMILNADU & PUDUCHERRY	DRY	DRY	DRY	ISOL	ISOL	SCT	SCT
32	COSTAL KARNATAKA	DRY	DRY	DRY	DRY	DRY	DRY	DRY
33	NORTH INTERIOR KARNATAKA	DRY	DRY	DRY	DRY	DRY	DRY	DRY
34	SOUTH INTERIOR KARNATAKA	DRY	DRY	DRY	DRY	DRY	DRY	DRY
35	KERALA AND MAHE	DRY	DRY	DRY	DRY	ISOL	ISOL	ISOL
36	LAKSHADWEEP	DRY	DRY	DRY	DRY	DRY	DRY	SCT

- As the lead period increases forecast accuracy decrease.

ANNEXURE II





- Action may be taken based on ORANGE AND REDCOLOUR warnings.
- Vulnerable regions likely urban and hilly areas action may be initiated for heavy rainfall warning.
- As the lead period increases forecast accuracy decreases.

Detailed districtwise Multi Hazard weather warning for next five days available at
<https://mausam.imd.gov.in/responsive/districtWiseWarningGIS.php>

Weather forecast over Delhi/NCR during 20th to 23rd January 2026**Past Weather:**

There has been no significant change in minimum temperatures and rise in maximum temperatures by 1-4°C during past 24 hours over Delhi. The maximum temperatures over Delhi were around 23 to 27°C and the minimum temperatures are around 07-09°C respectively. The minimum temperatures are above normal (1.6 to 3.0) at isolated places and normal (-1.5 to 1.5°C) over remaining parts of Delhi. The maximum temperatures were markedly above normal (5.1 or more) at a few places, appreciably above normal (3.1 to 5.0) at many places over Delhi. Safdarjung airport reported lowest visibility 200m from 0730 IST to 0800 IST, which thereafter improved to 300m at 0830 IST of today, 20.01.2026. Palam reported lowest visibility 600m from 0800 IST to 1000 IST, which thereafter improved to 700m at 1030 IST of today, 20.01.2026. Partly cloudy sky conditions with predominant surface wind from the variable directions with a wind speed up to 10 kmph prevailed during the past 24 hours. Mainly clear sky conditions with wind speed reaching up to 10 kmph from the northwest direction prevailed over the region in the forenoon today.

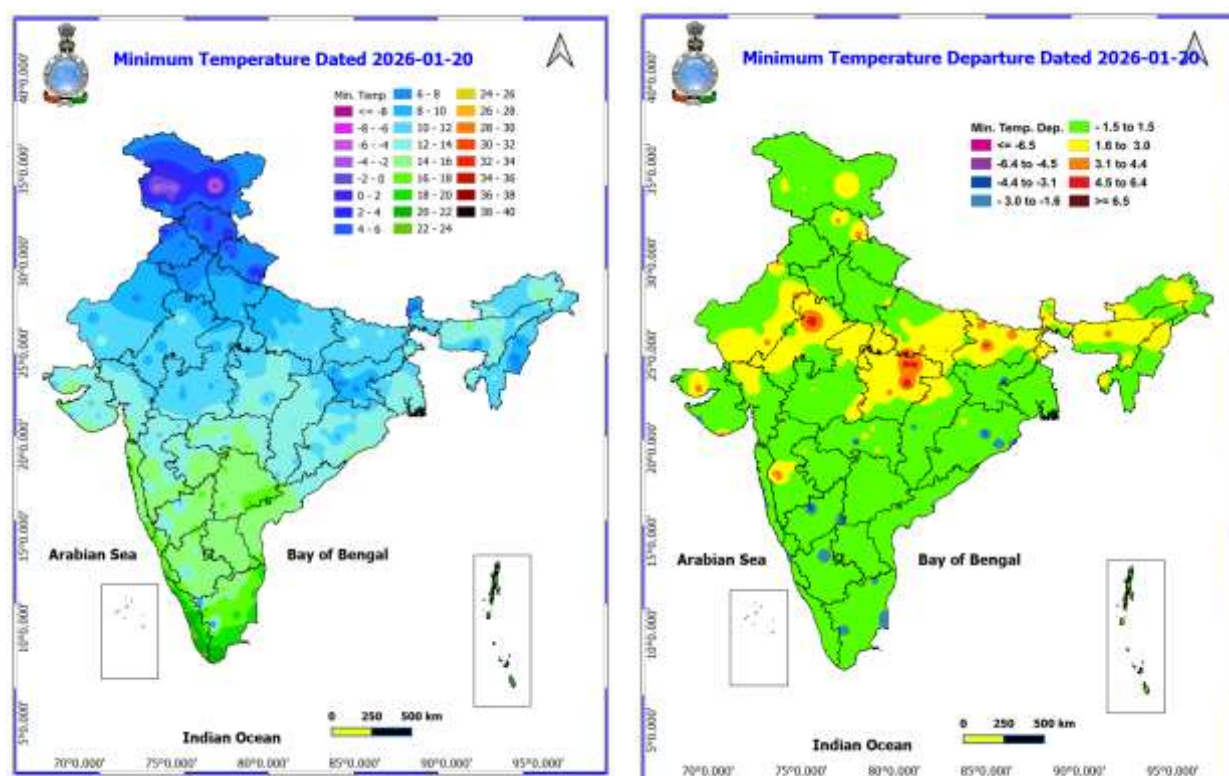
Weather Forecast:

20.01.2026: Mainly clear sky. Mist during night. The maximum temperatures are likely to be in the range of 23°C to 25°C. The maximum temperatures will be appreciably above normal (3.1 to 5.0) over Delhi. The predominant surface wind is likely to be from the northwest direction with wind speed reaching up to 10 kmph during the afternoon hours. The wind speed will decrease becoming up to 08 kmph from the north direction during evening and night.

21.01.2026: Partly cloudy sky. Shallow to Moderate fog at many places during morning hours. The maximum and minimum temperatures over Delhi are likely to be in the range of 22°C to 24°C and 06°C to 08°C respectively. The minimum temperatures will near normal and the maximum temperatures will appreciably above normal (3.1 to 5.0) over Delhi. The predominant surface wind is associated with calm wind gradually reaching up to 05 kmph from west direction during the morning hours. The wind speed will increase becoming up to 16 kmph from the northwest direction in the afternoon. The wind speed will decrease becoming less than 10 kmph from the west direction during evening and night.

22.01.2026: Partly cloudy sky becoming generally cloudy sky towards afternoon/evening. Shallow to Moderate fog during morning hours. The maximum and minimum temperatures over Delhi are likely to be in the range of 24°C to 26°C and 06°C to 08°C respectively. The minimum will near normal and the maximum temperatures will appreciably above normal (3.1 to 5.0) over Delhi. The predominant surface wind is associated with calm wind gradually reaching up to 10 kmph from west direction during the morning hours. The wind is likely to be from the southeast direction with wind speed up to 10 kmph during afternoon. The wind speed will increase becoming less than 15 kmph from the southeast direction during evening and night.

23.01.2026: Generally cloudy sky. Thunderstorm with gusty winds speed reaching 25-35 kmph. Light to Very Light Rain likely. Strong surface winds speed reaching 20-30 kmph. Shallow to Moderate fog during morning hours. The maximum and minimum temperatures over Delhi are likely to be in the ranges of 19°C to 21°C and 09°C to 11°C respectively. The minimum temperatures will above normal (1.6 to 3.0) and the maximum temperatures will above normal (1.6°C to 3.0°C) over Delhi. The predominant surface wind is likely to southeast direction with wind speed reaching up to 15 kmph during the morning hours. The wind speed will increase up to 25kmph from the southeast direction in the afternoon hours. The wind speed will decrease becoming up to 12 kmph from the southeast direction during the evening and night.



Reported minimum temperature ($\leq 5^{\circ}\text{C}$) at 0830 hrs IST of the 20th January 2026.

Station	State	Temperature
Amritsar	Punjab	2.8
Tehri	Uttarakhand	3.3
Pantnagar	Uttarakhand	4.6

Impact expected due to dense/very dense fog in the morning hours: Dense fog conditions also likely during morning/night hours in isolated pockets over Haryana, Chandigarh & till 22nd January.

❖ **Transport and Aviation:**

- May affect some airports, highways and railway routes in the areas of met- sub-division.
- Difficult driving conditions with slower journey times.
- Unless taken precautionary measures, it may lead to some road traffic collisions.

❖ **Power Sector:**

- Chances of Tripping of Power lines in the very dense fog routes.

❖ **Human Health:**

- Lung related health impacts: Dense fog contains particulate matter and other pollutants and in case exposed it gets lodged in the lungs, clogging them and decreasing their functional capacity which increases episodes of wheezing, coughing and shortness of breath.
- Impact on people having asthma bronchitis: Long time exposure to dense fog may cause respiratory problem for people having asthma bronchitis and other lung related health problems.
- Eye Irritation: Dense fog contains pollutions of various types and these Pollutants in the air if exposed may tend to irritate the membranes of the eye causing various infections leading to redness or swelling of the eye.

Action suggested:

- ❖ Transport and Aviation:
 - Be careful while driving or outing through any transport.
 - Use fog lights during driving.
 - Be in touch with airlines, railways and state transport for schedule of your journey.
- ❖ Power Sector:
 - To keep ready Maintenance Team.
 - Human Health: To avoid outing until unless emergency and to cover the face.

Impact expected due to Cold Wave conditions: Cold wave conditions very likely in isolated pockets of Himachal Pradesh on 20th & 21st January.

- ❖ An increased likelihood of various illnesses like flu, running/ stuffy nose or nosebleed, which usually set in or get aggravated due to prolonged exposure to cold.
- ❖ Do not ignore shivering. It is the first sign that the body is losing heat. Get Indoors.
- ❖ Frostbite can occur due to prolonged exposure to cold. The skin turns pale, hard and numb and eventually black blisters appear on exposed body parts such as fingers, toes, nose and or earlobes. Severe frostbite needs immediate medical attention and treatment.
- ❖ Impact on agriculture, crop, livestock, water supply, transport and power sector at some places.

Action suggested:

- ❖ Wear several layers of loose fitting, light weight; warm woollen clothing.
- ❖ Cover your head, neck, hands and toes adequately as majority of heat loss occurs through these body parts. Wear several layers of loose fitting, light weight; warm woollen clothing rather than one layer of heavy cloth.
- ❖ Eat vitamin-C rich fruits & vegetable and drink sufficient fluids preferably warm fluids to maintain adequate immunity.
- ❖ Avoid or limit outdoor activities.
- ❖ Keep dry, if wet, change cloths immediately to prevent loss of body heat. Wear insulated/waterproof shoes.
- ❖ Warm the affected area of the body slowly with lukewarm water; do not rub the skin vigorously.
- ❖ If the affected skin area turns black, immediately consult a doctor.
- ❖ Maintain ventilation while using Heaters to avoid inhaling toxic fumes.
- ❖ Take safety measures while using electrical and gas heating devices.
- ❖ Extreme care needed for vulnerable people.
- ❖ Seek medical attention as soon as possible for someone suffering from frostbite/ Hypothermia.
- ❖ Protect livestock from cold weather.

Agromet advisories for likely impact of Cold Waves/ Low Temperatures

- In **Himachal Pradesh**, apply light and frequent irrigation to the standing crops in the evening hours to protect crops from low temperature stress or cold injury. Use mulching and cover the vegetable nurseries and young fruit plants with straw / polythene sheets to maintain optimum soil temperature.

Livestock / Poultry

- Keep the cattle in the sheds during night and provide dry bedding to protect them from cold.
- Keep the chicks warm by providing artificial light in the poultry sheds.

Legends & abbreviations:

- ❖ **Heavy Rain:**64.5-115.5mm; **Very Heavy Rain:**115.6-204.4mm; **Extremely Heavy Rain:** >204.4mm.
- ❖ **Obsy:** Observatory; Automatic Weather Station; **ARG:** Automatic Rain Gauge; **dist:** District; **NH:** National Highway; **KVK:** Krishi Vigyan Kendra; **DVC:** Damodar Valley Corporation; **PTO:** Part Time Office, **Aero:** Aerodrome, **IAF:** Indian Air Force.
- ❖ **Region wise classification of meteorological Sub-Divisions:**
 - **Northwest India:** Western Himalayan Region (Jammu-Kashmir-Ladakh-Gilgit-Baltistan-Muzaffarabad, Himachal Pradesh and Uttarakhand); Punjab, Haryana-Chandigarh-Delhi; West Uttar Pradesh, East Uttar Pradesh, West Rajasthan and East Rajasthan.
 - **Central India:** West Madhya Pradesh, East Madhya Pradesh, Vidarbha and Chhattisgarh.
 - **East India:** Bihar, Jharkhand, Sub-Himalayan West Bengal & Sikkim; Gangetic West Bengal, Odisha and Andaman & Nicobar Islands.
 - **Northeast India:** Arunachal Pradesh, Assam & Meghalaya and Nagaland, Manipur, Mizoram & Tripura.

- **West India:** Gujarat Region, Saurashtra & Kutch, Konkan & Goa, Madhya Maharashtra and Marathawada.
- **South India:** Coastal Andhra Pradesh & Yanam, Telangana, Rayalaseema, Coastal Karnataka, North Interior Karnataka, South Interior Karnataka, Kerala & Mahe, Tamil Nadu, Puducherry & Karaikal and Lakshadweep.

LEGENDS

1. अंडमान और निकोबार द्वीपसमूह

2. अरुणाचल प्रदेश

3. असम और मेघालय

4. नागालैंड, मणिपुर, मिजोरम और त्रिपुरा

5. उप-हिमालयी पश्चिम बंगाल और सिक्किम

6. गंगीय पश्चिम बंगाल

7. ओडिशा

8. झारखंड

9. बिहार

10. पूर्वी उत्तर प्रदेश

11. पश्चिम उत्तर प्रदेश

12. उत्तराखंड

13. हरियाणा, चंडीगढ़ और दिल्ली

14. पंजाब

15. हिमाचल प्रदेश

16. जम्मू और कश्मीर और लद्दाख

17. पश्चिम राजस्थान

18. पूर्वी राजस्थान

19. पश्चिम मध्य प्रदेश

20. पूर्वी मध्य प्रदेश

21. गुजरात

22. सौराष्ट्र

23. कोंकण और गोवा

24. मध्य महाराष्ट्र

25. मराठवाड़ा

26. विदर्भ

27. छत्तीसगढ़

28. तटीय आंध्र प्रदेश और यनम

29. तेलंगाना

30. रायलसीमा

31. तमिलनाडु, पुडुचेरी और कराईकल

32. तटीय कर्नाटक

33. आंतरिक उत्तरी कर्नाटक

34. आंतरिक दक्षिणी कर्नाटक

35. केरल और माहे

36. लक्षद्वीप



1. Andaman & Nicobar Islands

2. Arunachal Pradesh

3. Assam & Meghalaya

4. Nagaland, Manipur, Mizoram & Tripura

5. Sub-Himalayan West Bengal & Sikkim

6. Gangetic West Bengal

7. Odisha

8. Jharkhand

9. Bihar

10. East Uttar Pradesh

11. West Uttar Pradesh

12. Uttarakhand

13. Haryana, Chandigarh & Delhi

14. Punjab

15. Himachal Pradesh

16. Jammu & Kashmir and Ladakh

17. West Rajasthan

18. East Rajasthan

19. West Madhya Pradesh

20. East Madhya Pradesh

21. Gujarat

22. Saurashtra

23. Konkan & Goa

24. Madhya Maharashtra

25. Marathwada

26. Vidarbha

27. Chhattisgarh

28. Coastal Andhra Pradesh & Yanam

29. Telangana

30. Rayalaseema

31. Tamilnadu, Puducherry & Karaikal

32. Coastal Karnataka

33. North Interior Karnataka

34. South Interior Karnataka

35. Kerala & Mahe

36. Lakshadweep

SPATIAL DISTRIBUTION (% of Stations reporting)

% Stations	Category	% Stations	Category
76-100	Widespread (WS/Most Places)	26-50	Scattered (SCT/A Few Places)
51-75	Fairly Widespread (FWS/Many Places)	1-25	Isolated (ISOL)



Fog



Heavy Snow



Cold Wave



Heavy Rain



Dust Storm



Cold Day



Very Heavy Rain



Heat Wave



Ground Frost



Extremely Heavy Rain



Warm Night



Thunder & Lightning



Hot Day



Hailstorm



Hot & Humid



Dust Raising Winds



Strong Surface Winds

COLOUR CODED WARNING

No Warning (No Action)

Watch (Be Aware)

Alert (Be Prepared To Take Action)

Warning (Take Action)

Probabilistic Forecast

Terms	Probability of Occurrence (%)
Unlikely	< 25
Likely	25 - 50
Very Likely	50 - 75
Most Likely	> 75

* Red colour warning does not mean "Red Alert", Red colour warning means "Take Action".

Forecast and Warning for any day is valid from 0830 hours IST of day till 0830 hours IST of next day.

For more details, kindly visit <https://mausam.imd.gov.in> or contact: 011-2434-4599

(Service to the Nation since 1875)

DEFINITION/CRITERIA

Rain/ Snow *

Heavy: 64.5 to 115.5 mm/cm *
Very Heavy: 115.6 to 204.4 mm/cm *
Extremely Heavy: > 204.4 mm/cm *

Heat Wave

When maximum temperature of a station reaches $\geq 40^{\circ}\text{C}$ for plains and $\geq 30^{\circ}\text{C}$ for hilly regions
(a) Based on Departure from normal

Heat Wave: Maximum Temperature Departure from normal 4.5°C to 6.4°C .

Severe Heat Wave: Maximum Temperature Departure from normal $\geq 6.5^{\circ}\text{C}$

(b). Based on Actual maximum temperature

Heat Wave: When actual maximum temperature $\geq 45^{\circ}\text{C}$.

Severe Heat Wave: When actual maximum temperature $\geq 47^{\circ}\text{C}$.

(c). Criteria for heat wave for coastal stations

When maximum temperature departure is $> 4.5^{\circ}\text{C}$ from normal. Heat Wave may be described provided maximum temperature $\geq 37^{\circ}\text{C}$.

Warm Night

When maximum temperature remains 40°C

Warm Night: When minimum temperature departure 4.5°C to 6.4°C .

Severe Warm Night: When minimum temperature departure $> 6.4^{\circ}\text{C}$.

Cold Wave

When minimum temperature of a station $\leq 10^{\circ}\text{C}$ for plains and $\leq 0^{\circ}\text{C}$ for hilly regions.

(a). Based on departure

Cold Wave: Minimum Temperature Departure from normal -4.5°C to -6.4°C .

Severe Cold Wave: Minimum Temperature Departure from normal $\leq -6.5^{\circ}\text{C}$

(b) Based on actual Minimum Temperature (for Plains only)

Cold Wave: When Minimum Temperature is $\leq 4.0^{\circ}\text{C}$

Severe Cold Wave: When Minimum Temperature is $\leq 2.0^{\circ}\text{C}$

(c) For Coastal Stations

When Minimum Temperature departure is $\leq -4.5^{\circ}\text{C}$ & actual Minimum Temperature is $\leq 15^{\circ}\text{C}$

Cold Day

When minimum temperature of a station $\leq 10^{\circ}\text{C}$ for plains and $\leq 0^{\circ}\text{C}$ for hilly regions

Based on departure

Cold Day: Maximum Temperature Departure from normal -4.5°C to -6.4°C .

Severe Cold Day: Maximum Temperature Departure from normal $\leq -6.5^{\circ}\text{C}$

Fog

Phenomenon of small droplets suspended in air and the horizontal visibility $< 1\text{km}$

Moderate Fog: When the visibility between 500-200 metres

Dense Fog: when the visibility between 50- 200 metres

Very Dense Fog: when the visibility < 50 metres

Thunderstorm

Sudden electrical discharges manifested by a flash of light (Lightning) and a sharp rumbling sound (thunder)

Dust/Sand Storm

An ensemble of particles of dust or sand energetically lifted to great heights by a strong and turbulent wind.

Frost

Ice deposits on ground

Air temperature $\leq 4^{\circ}\text{C}$ (over Plains)

Squall

A strong wind that rises suddenly, lasts for atleast 1 minute.

Moderate: Wind speed 52-61 kmph

Severe: Wind speed 62-67 kmph

Very Severe: Wind speed > 67 kmph

Sea State

Effect of various waves in the sea over specific area

Rough to very rough: Wind speed 41-62 kmph (22-33 knots) & Wave height 2.5-6 metre

High to very high: Wind speed 63-117 kmph (34-63 knots) & Wave height 6-14 metre

Phenomenal: Wind speed > 117 kmph (> 63 knots) & Wave height > 14 metre

Cyclone

Cyclonic Storm: Wind speed 62-87 kmph (34-47 knots)

Severe Cyclonic Storm: Wind speed 88-117 kmph (48-63 knots)

Very Severe Cyclonic Storm: Wind speed 118-165 kmph (64 - 89 knots)

Extremely Severe Cyclonic Storm: Wind speed 166-220 kmph (90 -119 knots)

Super Cyclone Storm: Wind speed > 220 kmph (> 119 knots)

* Red colour warning does not mean "Red Alert", Red colour warning means "Take Action".

Forecast and Warning for any day is valid from 0830 hours IST of day till 0830 hours IST of next day.

For more details, kindly visit <https://mausam.imd.gov.in> or contact: 011-2434-4599

(Service to the Nation since 1875)